

The Drawing Board

Reading Chapter, Pennsylvania Society of Professional Engineers



A Publication of the PSPE Reading Chapter

January 2011

Inside the Drawing Board

| | |
|----------------------------------------------|---------|
| Message from the President | Page 2 |
| Chapter Officers & Board Members | Page 3 |
| January Lunch Meeting Announcement | Page 4 |
| PSPE Reading Chapter Scholarship..... | Page 5 |
| MATHCOUNTS | Page 6 |
| Free PDH Announcement | Page 6 |
| PSPE Reading Chapter Golf Outing Flyer | Page 7 |
| Off The Board | Page 8 |
| National Engineers Week Banquet | Page 10 |

2011 Chapter Activities

- **January 2011** - **Lunch Meeting at Chef Alan's American Bistro**
Topic: Carbon Capture and Storage: Achieving Effectiveness, Public Acceptance and Scale – An Industry Perspective, By: Kevin McAuliffe, Worley Parsons, January 19, 2011
- **February 2011** - **Sovereign Center Tour**
- **MATHCOUNTS, February 5, 2011**
- **March 2011** - **Marcellus Shale Presentation**
- **Science Fair**
- **April 2011** - **Science Fair / MATHCOUNTS Awards Banquet**
- **May 2011** - **Evergreen Power Plant Tour**
- **June 2011** - **PSPE Reading Chapter Golf Outing, June 23, 2011**

You can save the Chapter the cost of a stamp and copying charges by receiving your copy of the Drawing Board by e-mail. You need Adobe Acrobat to be able to view the Drawing Board. Just e-mail Frank Falzone, E.I.T. at FFalzone@TrafficPD.com with your e-mail address to receive your e-mail copy.

MESSAGE FROM THE PRESIDENT

By Tuan Duong, P.E.

Welcome to the January Issue of the Drawing Board. Since the last issue of the Drawing Board, we had a joint general membership meeting with the Valley Forge Chapter on November 16, 2010. Timothy P. Esler, CPCU of Fenner & Esler Agency, Inc. presented a Professional Liability seminar at Cutillo's in Pottstown and a certificate was given out for 1.0 PDH. Everyone found the seminar to be very informative. Due to the Holidays, there wasn't a general membership meeting in December, but we have a lot of great events coming up.

The next event will be held on January 19, 2010 at Chef Alan's American Bistro in West Reading. The topic will be "Carbon Capture and Storage: Achieving Cost Effectiveness, Public Acceptance and Scale" to be presented by Kevin McAuliffe of **WorleyParsons**.

In February the Reading Chapter will be hosting the MATHCOUNTS competition at Alvernia University on February 5, 2011. Please see the article by Eric Mountz, MATHCOUNTS Coordinator and Secretary, in this issue for more details.

February will be a very busy month, in addition to the MATHCOUNTS competition, a tour of the Sovereign Center is being scheduled during Engineer's Week (February 20-26). Details of the tour are being finalized and a meeting announcement will be sent out to the general membership once we have everything finalized.

I would like to mention again, we are also reaching out to some of the local school districts to offer any assistance they may need from the Chapter. We are looking for volunteers to help out with mentoring of students at Wilson School District. If you would like to volunteer some of your time please contact me or Denise Alston-Guiden, Board member.

Finally, I would like to wish everyone a happy and prosperous New Year! If there is anything that I or any of the Board can do for you, please contact us per the information below.

Tuan Duong, P.E.

2010-2011 PSPE - READING CHAPTER BOARD MEMBERS

| | | | | |
|-------------------------|-------------------------------|---------------------------------------|---------------------|--------------------------------------------------------------------------------------------------|
| Tuan Duong, PE | President 2010-2011 | Traffic Planning & Design | 610.326.3100 (W) | tduong@trafficpd.com |
| James Cinelli, PE | Vice-President 2010-2011 | Liberty Environmental Inc | 610.375.9301 (W) | jinelli@libertyenviro.com |
| Eric Mountz, PE | Secretary 2008-2011 | Traffic Planning & Design | 610.326.3100 (W) | emountz@trafficpd.com |
| Jason Shaner, PE | Treasurer 2009 - 2011 | McCarthy Engineering Associates, Inc. | 610.373.8001 (W) | jshaner@mccarthy-engineering.com |
| Michael Hartman, PE | State Director 2010-2011 | --- | --- | hartman_700@verizon.net |
| Ken Gabel, EIT | Board Member 2011 - 2013 | WorleyParsons | 610.855.2505 (W) | kenneth.r.gabel@worleyparsons.com |
| Christopher Rickert, PE | Board Member 2011-2013 | WorleyParsons | 610.855.3620 (W) | christopher.rickert@worleyparsons.com |
| Frank Falzone, EIT | Board Member 2009 – 2012 | Traffic Planning & Design | 610.326.3100 (W) | ffalzone@trafficpd.com |
| Denise Alston, PE | Board Member 2009-2012 | Air Products and Chemicals, Inc. | 610.481.1146 (W) | AlstonDR@airproducts.com |
| John Weinheimer, PE | Board Member 2008-2011 | RPA Associates | 610.374.6144 (W) | jweinheimer@rpaengr.com |
| Jeff Euclide, PE | Board Member 2008-2011 | Entech Engineering, Inc. | 610.373.6667 (W) | jeuclide@entecheng.com |
| James McCarthy, PE | Past President 2010 - 2011 | McCarthy Engineering Associates, Inc. | 610.373.8001 (W) | jmccarthy@mccarthy-engineering.com |
| Karl Peterson, PE | Past President 2004 - 2010 | --- | 717.445.6626 (H) | aftan@frontiernet.net |



PSPE January Lunch Meeting

Reading Chapter



- Topic: Carbon Capture and Storage: Achieving Cost Effectiveness, Public Acceptance and Scale - An Industry Perspective
- When: Wednesday, January 19, 2011
12:00 PM—2:00 PM Lunch and Presentation
- Where: Chef Alan's American Bistro
Sixth & Penn Avenue
West Reading, PA
- Lunch: Order from the Menu
- Cost: \$25 / Person **for members**
\$40 / Person **for non-members**
(Drinks from bar are not included)
Cash or checks payable to PSPE Reading Chapter
Any proceeds from the lunch will go towards Mathcounts and the Scholarship Fund!

Please RSVP to Gwen Himes at GHimes@trafficpd.com or 610-326-3100 by Friday, January 14, 2011

Speaker: Kevin McAuliffe, WorleyParsons

Multiple solutions are being developed addressing carbon the use of coal for power generation and chemical production. Several technology demonstrations have been undertaken around the globe to address the challenges and provide solutions. The presentations will overview the issues associated with developing carbon management solutions and review the global response to the climate change challenge.

A CERTIFICATE FOR 1 PDH WILL BE DISTRIBUTED AT THE CONCLUSION OF THE PRESENTATION.



**Pennsylvania Society of Professional Engineers,
Reading Chapter**

Tuan Duong, P.E. President
Traffic Planning & Design
610-326-3100: FAX: 610-326-9410
tduong@trafficpd.com

**ENGINEERING
SCHOLARSHIP
2011 - 2012**

The Reading Chapter of the Pennsylvania Society of Professional Engineers (PSPE) will be awarding a \$2,000 scholarship.

The Scholarship is a one time only grant to be provided to an undergraduate engineering student who will be enrolled in the first semester of their second last or final year in the fall of 2011. The award will be based on academic success, character, personal merit, commitment plus school and community involvements.

General Information:

- Deadline for receipt of Application and supporting documentation is May 27, 2011
- For application and additional information, contact the Scholarship Chairperson listed below:

Kenneth R. Gabel, E.I.T.
301 Shelly Drive
Sinking Spring PA 19608
Phone: 610-207-7157
E-mail: kr_gabel@aol.com

- Reading Chapter web site: <http://www.pspe.org/reading/reading.shtml>

Applicant Requirements:

- Resident of Berks County, PA
- Enrolled in an undergraduate engineering program at an ABET accredited school
- Maintain a minimum 3.0 GPA
- Provide a transcript signed by an applicable College or University official
- Provide a copy of the fall 2011 class registration schedule. Applicant is required to be registered for a minimum of 10 credit hours/semester

MATHCOUNTS®

CALL FOR MATHCOUNTS VOLUNTEERS

This coming February middle school students in Berks County will have the opportunity to participate in MATHCOUNTS, a nationwide math enrichment, coaching and competition program. This local competition is made possible through the leadership of the Reading Chapter of the National Society of Professional Engineers. For those of you unfamiliar with the program, MATHCOUNTS promotes math achievement with all the challenge of a school sports event. Student Mathletes train individually and in teams. They have the opportunity to compete in local, state and national competitions. Prizes are awarded at all levels.

The 2011 Berks County Competition will be held on Saturday, February 5, 2011 at Bernardine Hall on the campus of Alvernia University, Reading, PA. The make-up date will be Saturday, February 19, 2010 at the same location. In order for the competition to run smoothly we need approximately 20 volunteers. *If available, please consider volunteering your time to help at the competition.* The time commitment involved is essentially one Saturday morning, with the event ending by 1:00 P.M.

Please contact Eric Mountz at 610.326.3100 or emountz@trafficpd.com to sign up or for more information.

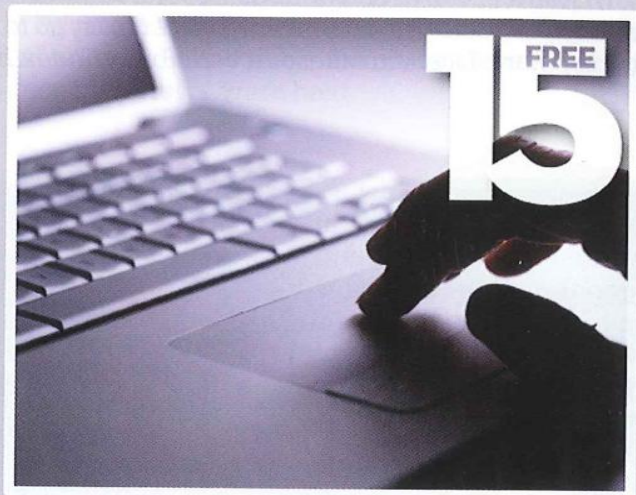
NSPE Members: Get Your Free PDHs Today

NSPE membership now includes, at no extra charge, access to 15 professional development hours through a selection of online courses.

Members can access the courses by going to www.nspe.org/15ForFree.

Course topics include communication, contract documents, engineering leadership, ethics, negotiating, qualifications-based selection, and green design.

At the end of each seminar, a quiz is available to those members who need it to meet their state's continuing education requirements.





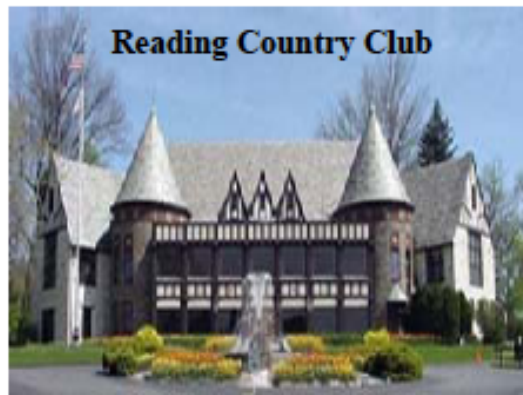
**READING CHAPTER PSPE
5TH ANNUAL GOLF OUTING**

Pennsylvania Society of Professional Engineers

*Thursday, June 23, 2011
Reading Country Club
1 p.m. Sharp Shotgun Start—4 Person Scramble
Registration and lunch begins at 11:30 a.m.
Team and Individual Prizes
(Awards presented at Cocktail Reception)
(Driving range available. Purchase balls at pro shop)*

Checks payable to:

Reading Chapter PSPE
c/o McCarthy Engineering
1121 Snyder Road
West Lawn, PA 19609



Reading Country Club

Registrations faxed to: 610.373.8077
before the deadline of June 10, 2011

Non-Golfer Volunteers: please call
Tammy or Kim at 610.373.8001



The Reading PSPE "Engineer's Cup" goes to the winning team from an Engineering Firm. A team from McCarthy Engineering won the "Cup" back in 2010 defeating the 2009 Champions from Hanover Engineering!



All Proceeds benefit the: "Reading Chapter PSPE Engineering Scholarship Fund and education"

OFF THE BOARD

In an effort to get to know some of our members, we have a feature called Off the Board (OTB). Each month, OTB will interview a member of the chapter.

This month our paparazzi have tracked down Jim McCarthy, P.E., PSPE Reading Chapter Board Member and Past President.

Here are the results:

OTB: What is your name and engineering discipline?

JM: Jim McCarthy, P.E. Civil Engineering

OTB: Where do you or did you work?

JM: McCarthy Engineering Associates, Inc.

OTB: How long have you worked there or been in business?

JM: 11 years

OTB: What do you do there?

JM: CEO and President

OTB: Any work accomplishments you would like to speak of?

JM: Founding and growing McCarthy Engineering.

OTB: Are there other notable employers in your career?

**JM: Catania Engineering – Project Manager
Thomas R. Gibbons & Associates – Director of Engineering**

OTB: What is your educational background?

JM: Bachelor of Science in Civil Engineering from Widener University

OTB: What licenses do you have?

**JM: Professional Engineer in Pennsylvania, New Jersey, Maryland and Delaware.
U.S. Coast Guard Master Captain License.**

OTB: What historical figure do you admire the most?

JM: Leonardo da Vinci

OTB: Tell us about your family.

JM: I have been married to the love of my life and my best friend Sandy for 12 years. We do not have any children which leaves us time to spoil our nieces and nephews.

OTB: What are your hobbies?

JM: Saltwater Sport Fishing and Golf.

OTB: What is your favorite quote?

JM: Anyone who has never made a mistake has never tried anything new. - Einstein

OTB: What is your favorite equation?

JM: Manning's Equation.

OTB: What is your favorite book?

JM: Gulliver's Travels

OTB: What cartoon character best describes you?

JM: Madagascar Penguins

OTB: What trait do you most dislike in others?

JM: Dishonesty.

OTB: Name something you'd like to learn to do during your lifetime.

JM: Learn to fly a plane.

OTB: What or who inspired you to get into engineering?

JM: Working for my father and grandfather in the construction field growing up.

OTB: How long have you been a member of PSPE?

JM: 19 years

OTB: Any advice for other PSPE members?

JM: To get involved and be active in the organization. The future of the profession as well as getting students interested in the profession is the key to our future. The involvement of all of us today is vital to advance the profession.



The Pennsylvania Society of Professional Engineers

Philadelphia Chapter www.pspe-philly.org 484-222-01PE

2011 NATIONAL ENGINEERS' WEEK BANQUET

Recognize, Promote and Celebrate the Role Engineers fill in the Greater Philadelphia Area

Saturday - February 26, 2011

5:00 PM to 10:00 PM

Springfield Country Club
400 West Sproul Road
Springfield, PA 19064
(610) 690 – 7600

- Free Parking
- 90 minute reception with Hot Butlred Hors d 'Oeuvres in the Table Top Exhibit Hall
- Subsidized Cash Bar in Exhibit Hall
- Presentations - Status of STEM – Awards – Comments by Awardees & Public Officials
 - Full Course Dinner with dessert and a glass of wine
- **Keynote Address by CBS 3's Meteorologist Kathy Orr**

Spend an enjoyable evening with significant others, friends and colleagues

Price per person - \$60.00 (Before December 31, 2010)

Price per person - \$65.00 (To February 18, 2011)

Price per person - \$75.00 (Late reservations and walk-ins)

Make reservations and payment using PayPal via website www.pspe-philly.org

For Sponsorships or to Table Top Exhibit Information, including making reservations at the 2010 prices which must be paid for by January 15, 2011, send an e-mail to: eWeek@pspe-philly.org

All sponsors and exhibitors will be listed in the 2012 National Engineers' Week Banquet Brochure

All money received, which is in excess of what is needed to run the Banquet, will be used for STEM activities throughout the Greater Philadelphia Area and reported in the next National Engineers' Week Banquet Brochure.





TRAFFIC PLANNING AND DESIGN, INC.

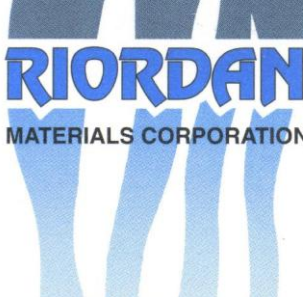
RANKED TOP 15 IN PA

BEST PLACES to work in PA

RANKED TOP 25 CE FIRM IN U.S.

WWW.TRAFFICPD.COM
610.326.3100

POTTSTOWN, PA LEHIGH VALLEY, PA HARRISBURG, PA CAMDEN, NJ



RIORDAN
MATERIALS CORPORATION

WATER AND WASTEWATER TREATMENT EQUIPMENT

MAIN OFFICE
6198 BUTLER PIKE SUITE 150
BLUE BELL, PA 19422-2600
PHONE: 215.628.9936
FAX: 215.628.9936
WEB: www.riordanmat.com
EMAIL: riordan@riordanmat.com

OTHER OFFICES IN READING, ALLENTOWN, AND CROFTON, MD

PA REPRESENTATIVES:
Art Auchenbach III, P.E. Carl Janson
Bob Smith, P.E. Matt Seng, P.E.



Liberty Environmental, Inc.

Providing Innovative Solutions to Complex Environmental Problems.

50 N. 5th Street, 5th Floor • Reading, PA 19601
Phone (610) 375-9301 • Fax (610) 375-9302
www.libertyenviro.com

- ◆ Air Quality Permitting and Planning
- ◆ Pollution Control Equipment Design
- ◆ Water and Wastewater Treatment
- ◆ Site Assessments and Remediation
- ◆ Wetlands and Ecological Studies



Excellence doesn't just happen.
It's carefully engineered.

McCarthy Engineering

1121 Snyder Rd • West Lawn
Phone: 610.373.8001
1.866.496.8744 (toll-free)

www.McCarthy-Engineering.com

Advertising is available in the Drawing Board and on the Chapter web site for \$50.00 per year. If a company wants to advertise and also place positions available on the web site, then the cost is \$100 per year. Historically, this was done by sending out invoices to past advertisers. The process to advertise has been changed and now in order to advertise you should send a check in the appropriate amount payable to “Reading Chapter PSPE” to Reading Chapter PSPE c/o McCarthy Engineering, 1121 Snyder Road, West Lawn, PA 19609. Along with your payment a jpeg file or similar file should be included of your advertisement.

Pennsylvania Society of Professional Engineers

Attn: Frank G. Falzone, Jr., E.I.T.
2500 E. High Street, Suite 650
Pottstown, PA 19464
Address Correction Requested